

INSEKTENSCHUTZ
sinax®



There are no obstacles between you and nature.

2024

WINDOW

Ocean 12 Springed Pin Portable Fly Screen

It is the most preferred fly screening system for windows as it is installed without drilling the window. It does not restrict your view of your window.

Due to its practical disassembly and assembly, it can be easily washed.

It is particularly well-suited for rental houses.



Plisse 17 Inboard

Installation is done from the inside without drilling the window. It is preferred for PVC windows.

Due to its practical disassembly and assembly, it can be easily washed.

After washing, the mesh should be kept in the cassette for 1 day to maintain its form.

By dismantling and storing in winter, its lifespan is expended.

WINDOW



Ege 40 Vertical Roller

Similar to conventional windows, it is one of the optimal solutions, especially for skylights, and is preferred due to its practical handling. Securing the mesh is effortlessly achieved by pulling down the mesh profile from the top. When you pull the mesh profile out of its bottom profile, it automatically rolls into the frame. Cleaning the mesh is done with a damp cloth without the need for disassembling the fly screen.



Ida 40 Frameless Roller

It is installed on outward and inward opening windows.

Securing the mesh is effortlessly achieved by pulling down the mesh profile from the top. When you pull the mesh profile, it automatically rolls into the top frame.

Cleaning the mesh is done with a damp cloth without the need for disassembling the fly screen.



WINDOW

Plisse 17 Horizontal

It is installed on windows, and it operates horizontally.
Storing the mesh in the frame when not in use extends the product's lifespan.



Inboard Fixed Deluxe

Installation is done from the inside without drilling the window. It is preferred for PVC windows.
Due to its practical disassembly and assembly, it can be easily washed.
By dismantling and storing in winter, its lifespan is extended.



Plisse 17 Inboard For Doors

Installation is done from the inside without drilling the door. It is preferred for PVC doors with shutters on the outside.

Due to its practical disassembly and assembly, it can be easily washed.

After washing, the mesh should be kept in the cassette for 1 day to maintain its form.

By dismantling and storing in winter, its lifespan is extended.



Plisse 28 Horizontal

To save space, it can be fully stored in the frame, ensuring a long lifespan. It is made of aluminum profiles, plastic and metal accessories, as well as high-quality polyester fabric. It operates horizontally. It is weather-resistant and there are different threshold alternatives.

Leaving the mesh inside the cassette when not in use will extend its lifespan.



20 mm
One Ramped Threshold



10 mm
One Ramped Threshold



10 mm
Double Ramped Threshold

DOOR

Plisse 28 Reversible - Double

It is an ideal solution to save space.
Leaving the mesh inside the cassette when not in use will extend its lifespan.
It is used for wide doors and functions horizontally.
Thanks to special threshold-free bottom profiles, it can be attached to doors.



Plisse 28 Reversible



Plisse 28 Double

DOOR



Tuba Deluxe Sliding



It is the ideal solution for lift-and-slide doors. Fiberglass mesh, Petscreen mesh, Transparent mesh or Solid Clear mesh can be used according to your preference.



DOOR

Vienna 50 Spring Hinged Door

It is designed for hinged balcony and garden doors.

It closes silently on its own thanks to a special mechanism.

It can be cleaned by washing or wiping with a damp cloth without removing it.



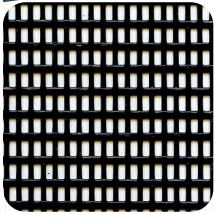
Ege 40 Horizontal Roller Screen

Ege 40 Horizontal Roller Screen is suitable for balcony and garden doors.

Thanks to its special spring mechanism, it collects mesh into cassette.

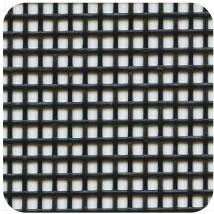
It can be cleaned by washing or wiping with a damp cloth without removing it.

MESH



Petscreen - Mesh

It is pet resistant.



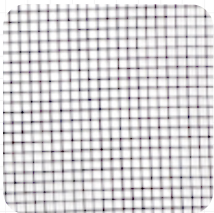
Tuffscreen - Mesh

It is used in large areas such as veranda facades. It is pet resistant and durable.



Solid Clear - Mesh

It is used in large sized doors and windows. It is durable, have excellent ventilation and 100% recycable.



Transparent - Mesh

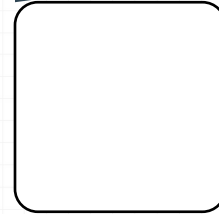
It maintains optical clarity by repelling water and resisting dirt and grime, providing a clear and brilliant outward view.



Fiberglass - Mesh

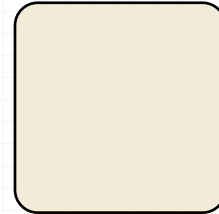
It is resistant to insects and flies, and suitable for doors and windows in standard dimensions.

PROFILE COLORS



Ral 9016

White



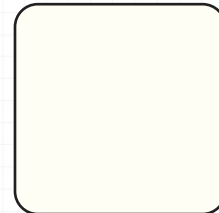
Ral 9001

Cream



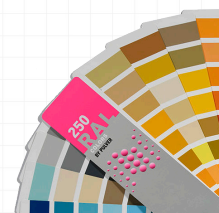
Ral 7016

Anthracite
Gray



Ral 9010

Pure White



Other Ral Codes

APPLICATIONS





INSEKTENSCHUTZ
sinax®



www.sinax.de

2024

www.sinax.com.tr